

Alley Inventory 2013

Alley #	To-From	Eligible
1	Monroe St from Jefferson to N Liberty St	No
2	Ashby Ave from Jefferson to N Liberty St	No
3	Monroe St from Jefferson St to Madison St	No
3	Monroe St from Jefferson St to Madison St	No
4	Jefferson St to End of Alley	Yes
5	Monroe St to Ashby Ave	Yes
6	Jefferson St to N Main St	Yes
7	Monroe St to Alley 6	Yes
8	Ashby Ave to Monroe St	Yes
9	Madison St to Alley 8	Yes
10	Madison St to end of Alley	Yes
11	E Washington St to Alley 391	No
12	N Main St to Madison St	Yes
13	Madison St from Clinton St to End	Yes
14	Madison St from Clinton St to Charles St	Yes
15	Madison St from Charles St to End	Yes
16	Albert St from Clinton St to End	Yes
17	Albert St from Clinton St to Charles St	Yes
18	Albert St from Charles to Harris Corp Parking Lot	No
19	Jefferson St to Rail Road	Yes
20	Monroe St	No
21	Ashby St	No
22	W Washington St to End of Alley	Yes
23	W Washington St to Jackson St	Yes
24	Liberty St to Alley 23	Yes
26	5th St to Edom Rd / 6th st	No
27	5th St to Alley 28	Yes
28	N Liberty St to Jackson St	No
29	Alley 28 to 3rd St	No
31	3rd St to 4th St	Yes
32	Alley 29 to Alley 31	Yes
33	3rd St to Alley 30	Yes
34	Collicello St to N Liberty	Yes
35	Collicello St to N Liberty	Yes
37	5th St to 6th St	Yes
38	5th St to End of Alley	Yes
39	6th St to Edom Rd	Yes
40	5th St to 6th St	Yes
41	4th St to 5th St	No
42	3rd St to Chicago Ave	Yes
43	3rd St to 4th St	Yes
44	4th St to End of Alley	Yes
45	2nd St to 3rd St	No
46	3rd St to 4th St	No
47	4th St to End of Alley	Yes
48	2nd St to 3rd St	No
49	Alley 49 to Lee Ave	Yes
50	4th St to 5th St	Yes
51	5th St to 6th St	Yes
52	6th St to 7th St	Yes
53	7th St to Virginia Ave	Yes

Alley Inventory 2013

Alley #	To-From	Eligible
54	2nd St to 3rd St	Yes
55	3rd St to 4th St	No
56	Park Cir to 6th St	Yes
57	Stuart St to Grant St	Yes
58	Rockingham Dr to Waterman Dr	Yes
59	Rockingham Dr to Waterman Dr	No
60	Rockingham Dr to End of Alley	No
63	3rd St to 2nd St	Yes
64	2nd St to End of Alley	Yes
65	Lee Ave to Virginia Ave	Yes
67	N High St to End of Alley	No
70	S Brooke St to Academy	No
71	W Market St to W Water St	No
72	W Market St to W Water St	Yes
75	W Elizabeth St to Alley 393	Yes
76	W Elizabeth to End of Alley	No
79	N High St to End of Alley	No
80	E Wolfe St to Green St	No
82	W Rock St to End	No
83	W Rock St to End	No
84	W Rock St to Gay St	No
85	Gay to End of Alley	Yes
86	Gay St to 1st St	No
87	W Gay St to 1st St	No
88	1st St to 2nd St	No
89	1st St to 2nd St	Yes
90	2nd St to 1st St	Yes
93	Alley 34 to Alley 35	Yes
95	S Dogwood Dr to S Willow St	No
96	S Willow St to S Brooke St	No
97	S Dogwood to End of Alley	Yes
98	S Willow St to Brooke Ave	Yes
100	Water St to Bruce St	No
101	Water Street to Bruce St	Yes
102	Brook Ave to S High St	No
104	Liberty St to End	No
109	Main St to Bruce St	No
110	Bruce St to Liberty St	No
111	Warren St to End	No
114	Lewis St to Grattan St	No
118	Alley from Kyle St to Parking lot at 677 Walnut Ln	No
119	Walnut Ln to Kyle St	No
120	S Main St to Walnut Ln	Yes
123	Old S High St to End of Alley	No
124	Old South High St to End of Alley	No
125	Old S High St to S High St between 343 and 337 Old S High St	Yes
127	Old S High St to S High St between 309 and 313 Old S High St	Yes
130	Federal St to Layman Ave	Yes
132	Grattan St to End of Alley	Yes
133	Cantrell Ave to End	No
134	S Main St to S Mason St	No

Alley Inventory 2013

Alley #	To-From	Eligible
136	Mason St to Ott St	No
137	Paul St to End	No
139	Monticello Ave to Ott St	Yes
140	From Alley to Alley behind 438 Ott St to rear of 338 Ott St	Yes
144	Main St to Federal St	No
145	Main St to Federal St	Yes
148	Paul St to end of Alley	Yes
149	Paul St to Alley	Yes
150	Mason St to End	No
151	Campbell St to Alley between 239 and 247 Campbell St	No
152	Alley to Alley behind 478 S Mason St	Yes
153	Campbell St to Alley between 281 and 285 Campbell St	No
154	Campbell St to Ash Tree Ln	No
158	Ash Tree Ln to Franklin St	Yes
163	Bruce St to Franklin St	No
164	Franklin St to Alley	Yes
165	Monticello Ave to Myers Ave	Yes
166	Monticello Ave to Ott St	No
167	Alley to Paul St	No
168	Paul St to Westview St	No
170	Alley Off End of S Brook Ave	No
171	Weaver Ave to Hillcrest Dr	No
175	S Main St to End	No
176	Alley to End	No
177	Maplehurst Ave to Alley	No
178	Maplehurst Ave to Fairview Ave	No
179	Alley to End	No
180	Fairview Ave to Port Republic Rd	No
182	Hillcrest Dr to Newman Ave	No
188	Myrtle St to Alley 215	No
189	Alley 212 to E Elizabeth St	No
190	E Johnson St to E Washington St	Yes
191	E Elizabeth St to Alley 212	No
192	Hill St to Sterling St	No
196	Collicello to Alley 199	No
197	3rd St to N Liberty St	No
201	W Wolfe St to Lineweaver Apts Parking Lot	No
202	Harris St to Alley 205	Yes
205	Johnson St to Alley 202	Yes
206	E Johnson St to End	Yes
208	Mason St to Rock St	No
209	Rock St to Wolfe St	No
210	N Mason St to End	No
212	Myrtle St to Alley 189	Yes
213	Broad St to Myrtle St	No
214	E Wolfe St To Alley 213	No
215	E Rock St to E Wolfe St	No
216	Myrtle to Alley 215 Between 235 Myrtle St and 396 E Wolfe St	Yes
217	Myrtle to Alley 215 Between 345 and 355 Myrtle St	Yes
219	Kelley St to Effinger St	Yes
220	Kelley St to Johnson St	No

Alley Inventory 2013

Alley #	To-From	Eligible
221	Kelley St to E Johnson St between 180 and 184 Kelley St	Yes
222	Broad St to Simms Ave	No
223	Harris St to Simms Ave	Yes
225	E Johnson to Alley 223	No
226	E Washington St to Effinger St	Yes
227	E Johnson St to Alley 223	Yes
228	Johnson St to Kelley St	Yes
229	Johnson St to Kelley St	No
231	Kelley St to Effinger St between 440 Effinger St and 511 Sterling St	Yes
232	Hill St to Sterling St between 425 Hill St and Newtown Cemetery	Yes
233	Sterling St to Myrtle St between 375 Sterling St and 470 E Rock St	Yes
234	Hill St to End between E Rock and E Wolfe St	Yes
235	Sterling St to Myrtle St	Yes
236	Myrtle St to Alley 308	No
237	E Elizabeth St to Alley 192 between 544 E Elizabeth and 114 Sterling St	Yes
238	E Elizabeth St to Alley 192 between 105 Hill St and 548 E Elizabeth St	Yes
239	Sterling St to Hill St	No
240	Sterling St to Alley 241	No
241	Alley 239 to Alley 240	Yes
243	Hill St to End	Yes
244	E Elizabeth St to E Wolfe St	Yes
245	E Elizabeth St to E Wolfe Stx	Yes
246	Closed Alley to Alley 247	No
247	Kelley St to End	No
248	Old Furnace Rd to Kelley St	No
250	Summit St to Alley	No
301	S Willow St to S Brook Ave	Yes
302	W Water St to End of Alley	Yes
303	Franklin St to End	Yes
304	Bruce St to Franklin St	Yes
305	Monticello Ave to Myers Ave	No
306	Newman Ave to Water St	Yes
307	E Wolfe St to E Rock St	Yes
308	E Market St to Alley 236	No
309	N Main St to N Mason St	Yes
310	7th St from Lee Ave to Virginia Ave	Yes
311	6th St from Lee Ave to Virginia Ave	Yes
312	6th St from Virginia Ave to Edom Rd	Yes
313	Collicello From End of Collicello Asphalt to Edom Rd	Yes
314	Jackson St from 5th St to Edom Rd	No
315	Lee Ave from 7th St to Virginia Ave	No
316	Jackson St from Liberty St to Alley 23	No
317	2nd St from Hartman Dr to Rockingham Dr	Yes
318	Rockingham Dr from end of Pavement to End of Rockingham Dr	No
319	Dogwood Dr from 3rd St to Rockingham Dr	No
320	Beech St from Ohio Ave to New York Ave	Yes
321	Beech St from New York Ave to End	Yes
322	Boulevard Ave from Mt Clinton Pike to Wilson Ave	Yes
323	Boulevard Ave from Wilson Ave to End	No
324	Fir St from Ohio Ave to End	No
325	Fir St from End of Fir St to Maryland Ave	No

Alley Inventory 2013

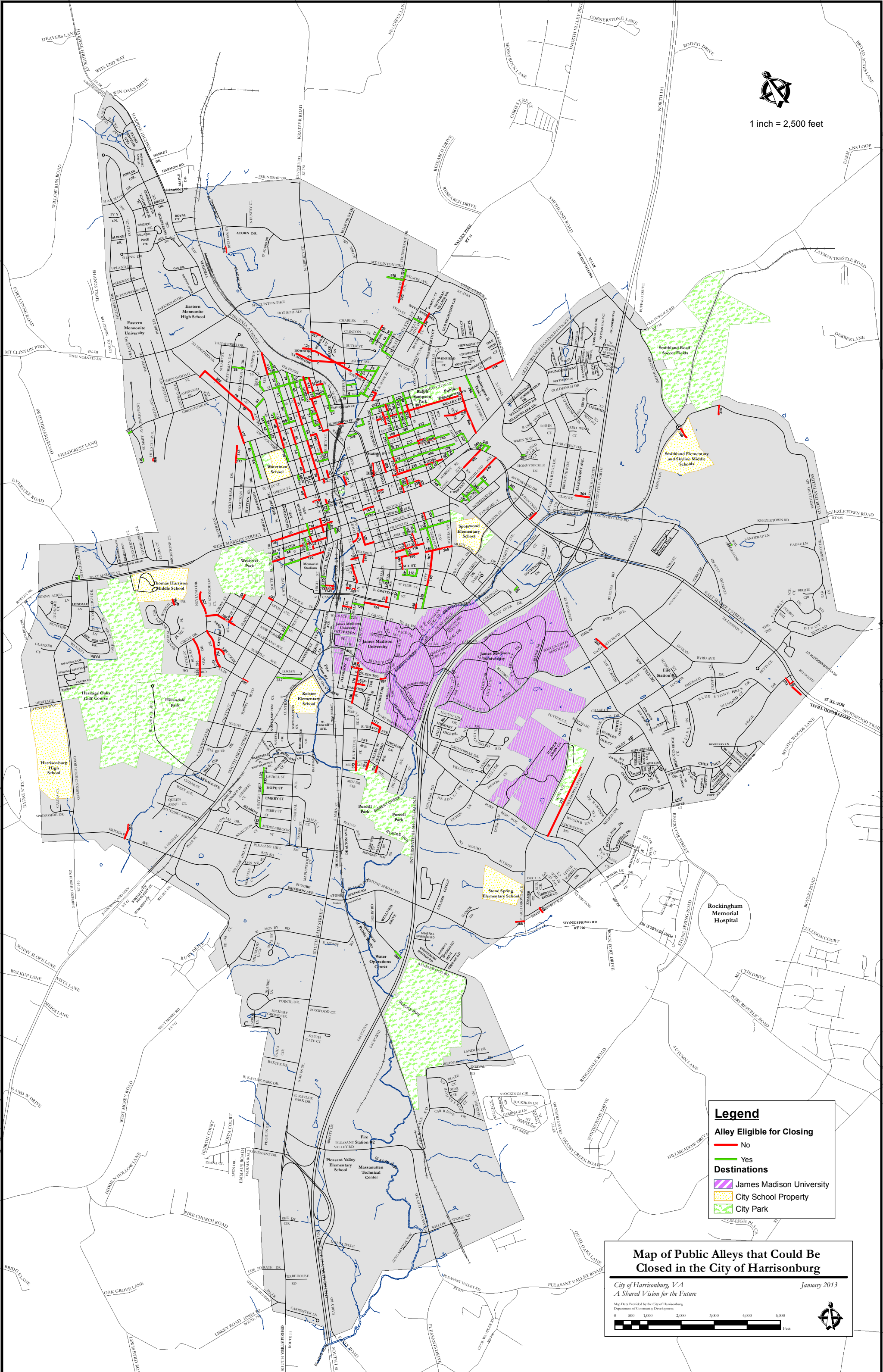
Alley #	To-From	Eligible
326	Maryland Ave from End of Maryland Ave to Grove St	No
327	Neyland Ave from End of Asphalt to End of Neyland Dr	No
328	Oak Dr from Circle Dr to Circle Dr	No
329	Oak Dr from Circle Dr to End of Oak Dr	No
330	Ridge Rd from End of Ridge Rd to Neyland Dr	No
331	Neyland Dr from Neyland Dr to Circle Dr, Sunrise Ave and Neyland Dr	No
332	Heatwole Rd from Sharon St to end of Heatwole Rd	Yes
333	Heatwole Rd from Hope St to Laurel St	Yes
334	Heatwole Rd from Laurel St to End of Heatwole Rd	Yes
335	Heatwole Rd from Hope St to Laurel St	Yes
336	Heatwole Rd from Hope St to Emery St	Yes
337	Suter St from End of Suter St to N Liberty St	No
338	Wilson Ave from Boulevard Ave to End of Alley	Yes
339	Long Ave from the End of Asphalt on Long Ave to E Market St	No
340	Franklin St from End of Asphalt on Franklin St to E Market St	No
341	Alley from Hawkins St to End of Alley	Yes
342	Alley from Reservoir St to Alley 341	Yes
343	Alley From Hawkins St to Franklin St between 532 Hawkins St and 182 Reservoir St	Yes
344	Alley From Hawkins St to Franklin St between 568 and 578 Hawkins St	Yes
345	Alley from E Market St to End of Alley	Yes
346	Alley from Market St to End of Alley	Yes
347	Alley From Market St to Alley 346 between 716 and 718 E Market St	Yes
348	Alley From Market St to Alley 346 between 722 and 726 E Market St	Yes
349	2nd St From Main St to Moore St	Yes
350	Bruce St from S Dogwood Dr to S Willow St	No
351	Dixie Ave from S Dogwood Dr to End	No
352	Unnamed street from University Blvd to End	No
353	Erickson Ave to End	No
354	Washington St from Vine St to Longview Dr	No
355	Neyland Dr from Chestnut Dr to End	No
356	Greystone St from Summit Ave to City Limits Line	Yes
357	W Rock St to Lineweaver Apts	Yes
358	Tower St through Transit Lot	Yes
359	E Rock St from Summit St to the Alley 307	Yes
360	Remainder of Switchboard Rd original R/W	Yes
361	Pedestrian Access from Wyndham Dr to Thomas Harrison Middle School	No
362	Blue Ridge Dr From End of Asphalt to E Market St	No
363	Oakland St from End of Asphalt to E Market St	Yes
364	Clay St from End of City Asphalt to I-81 R/W	No
365	Smithland Rd to End of R/W	No
366	Linda Ln Traffic Circle to Skyland Middle School Driveway	No
367	End of Mt View Dr asphalt to End of Street	Yes
368	Ott St From End of Asphalt to Cantrell Ave	No
369	Alley from Westview Ave to Cantrell Ave	Yes
370	W Grace St to End of Alley	Yes
371	Roosevelt St from End of Asphalt to end of R/W	Yes
372	S High St to Rail Road	Yes
373	Bluestone St from Monument Ave to End of R/W	No
374	Crawford Ave from Monument Ave to Purcell Park	No
375	Valley St from Monument Ave to Purcell Park	No
376	Undeveloped St from King Edwards Way to City Limits	No

Alley Inventory 2013

Alley #	To-From	Eligible
377	Old Peach Grove Ave from Port Republic Rd to End of R/W	No
378	Red Oak St from End of Asphalt to End of R/W	No
379	W Johnson St from End of Asphalt across RR to End of Asphalt	No
380	Old S High St	Yes
381	Spotswood Terrace from End of Asphalt to End of R/W	Yes
382	Access Rd	No
383	Access Rd	No
384	Beery Rd from End of Asphalt to I-81 R/W	Yes
385	Summit Ave from End of Asphalt to End of R/W	Yes
386	Hillside Ave from End of Asphalt to End of R/W	No
387	N Hawkins St	Yes
388	Undeveloped Street	No
389	Walnut Ln to End of Parking Lot at 677 Walnut Ln	No
390	Sterling St to Myrtle St between 424 and 434 Myrtle St	Yes
391	N Main St to Alley 11	No
392	Waterman Dr to Chicago Ave	No
393	N High St to Alley 75	Yes
394	End to Alley 150	No
395	E Market St to alley 212	Yes
396	E Gay St to E Rock St	Yes
397	Effinger to E Gay St	Yes
398	Sterling St to Hill St between E Rock and E Wolfe St	Yes
399	Hill St to End between E Rock and E Wolfe St	Yes
400	Hill St to Alley 241	Yes
401	Simms Ave to Alley closure	No
402	Moore St from End of Asphalt on Moore St to Emerson Dr	No



1 inch = 2,500 feet



Legend

Alley Eligible for Closing

- No
- Yes

Destinations

- James Madison University
- City School Property
- City Park

Map of Public Alleys that Could Be Closed in the City of Harrisonburg

City of Harrisonburg, VA January 2013

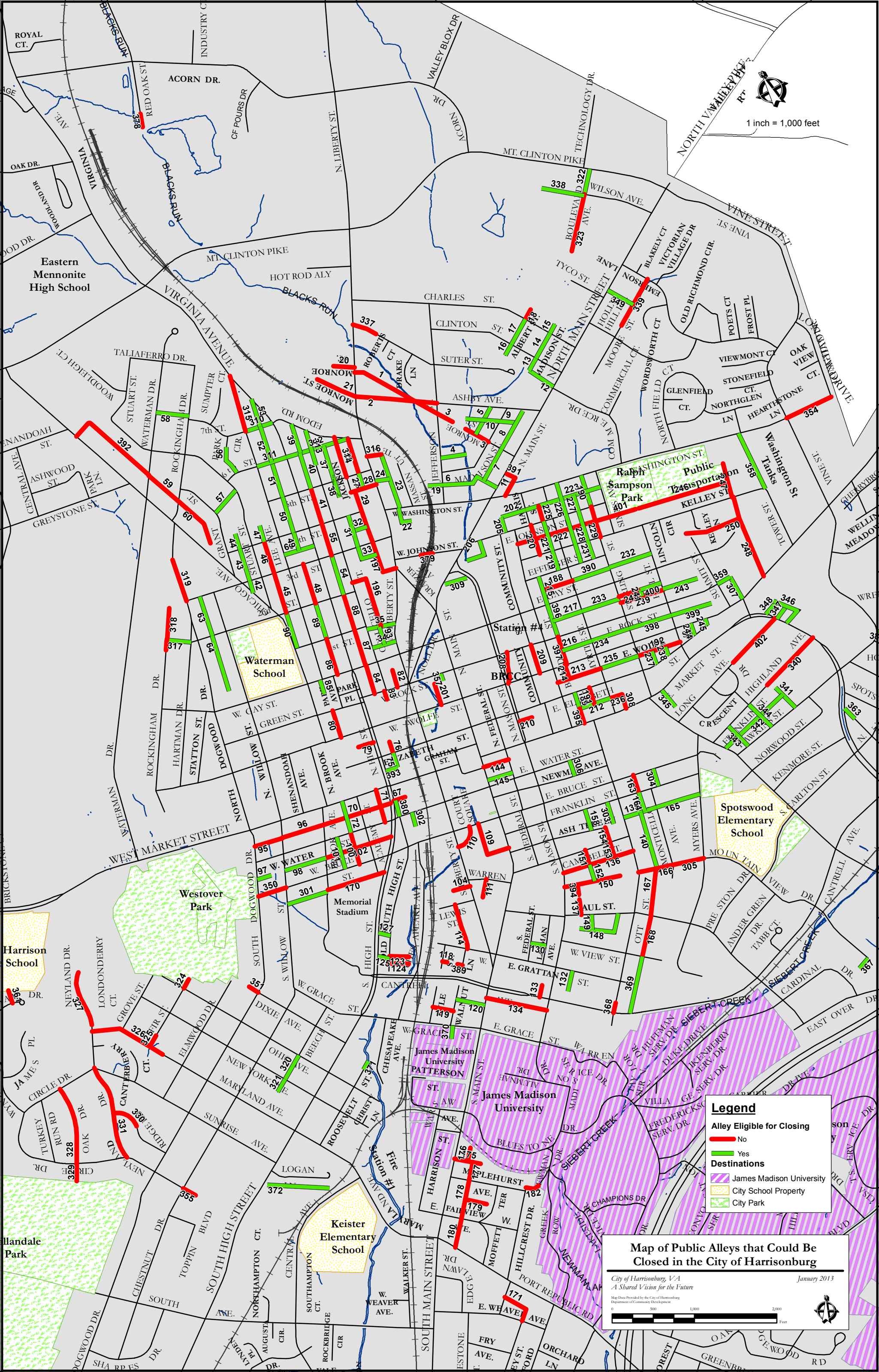
A Shared Vision for the Future

Map Data Provided by the City of Harrisonburg
Department of Community Development

0 500 1,000 2,000 3,000 4,000 5,000
Feet



1 inch = 1,000 feet



Legend

- Alley Eligible for Closing
 - No (Red line)
 - Yes (Green line)
- Destinations
 - James Madison University (Purple hatched area)
 - City School Property (Yellow hatched area)
 - City Park (Green hatched area)

Map of Public Alleys that Could Be Closed in the City of Harrisonburg

City of Harrisonburg, VA
A Shared Vision for the Future

January 2013

Map Data Provided by the City of Harrisonburg
Department of Community Development